



# SUSTAINABILITY & GLOBAL HEALTH IMPACT STORY



مستشفى الشرق  
ALSHARQ HOSPITAL  
دبا Dibba

*Caring for People. Protecting Our Planet.*



*At Al Sharq Hospital,  
sustainability means caring for  
people and the planet.*

At Al Sharq Hospital, we care not only for your health, but also for the environment that supports healthy living.

We believe that a healthy hospital should care for patients today while protecting the world they will live in tomorrow.

Sustainability is not an extra initiative for us — it is part of how we deliver safe, responsible, and high-quality healthcare every day.

# SUSTAINABILITY ROADMAP

2025

2026

2027

BASELINE & OPTIMIZATION

INNOVATION & EXPANSION

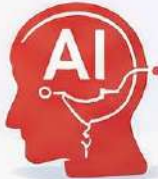
CIRCULAR & CARBON NEUTRALITY



Energy Audit



Digital Infrastructure Enhancements



AI-Powered Diagnostics



Green Building Certification



Carbon Neutral Operation



Zero Waste Initiative



Sustainability initiatives have resulted in substantial financial savings and measurable reductions in environmental impact, reinforcing our commitment to responsible healthcare.

## *What Sustainability Means to Us*

Sustainability means using our resources wisely today so that future generations can continue to benefit from quality healthcare and a healthy environment.

### **In our hospital, sustainability means:**

- 🌱 Delivering excellent patient care
- 🌱 Reducing waste and unnecessary consumption
- 🌱 Using energy and water responsibly
- 🌱 Making smarter choices in how we work, build, and procure
- 🌱 Creating a culture where everyone plays a role





## *How Healthcare and the Environment are Connected*

Hospitals operate 24 hours a day. They use electricity, water, medical supplies, digital systems, and transportation continuously.

How these resources are managed affects:

- 🌿 Patient safety
- 🌿 Service reliability
- 🌿 Environmental impact
- 🌿 Long-term healthcare sustainability

*By improving efficiency and reducing waste, we strengthen our ability to care for patients — not weaken it.*

# 2025 - 2027 SUSTAINABLE HEALTHCARE GOALS

Strategic objectives guiding Al Sharq Hospital Dibba's sustainable development through measurable targets.



## *Responsible Operations*

- 🌿 Achieve Carbon Neutrality by **2027**
- 🌿 Reduce Single - Use Plastics by **30%**
- 🌿 Reduce Medical Waste Generation by **20%**
- 🌿 Increase Recycling Rate to **25%**

# 2025 - 2027 SUSTAINABLE HEALTHCARE GOALS

Strategic objectives guiding Al Sharq Hospital Dibba's sustainable development through measurable targets.

## *Green Facilities & Procurement*

- 🌿 Adopt Green Building Certification
- 🌿 Upgrade to Energy - Efficient systems
- 🌿 Prefer Green & Sustainable Suppliers
- 🌿 Adopt Sustainable Procurement Policy



# 2025 - 2027 SUSTAINABLE HEALTHCARE GOALS

Strategic objectives guiding Al Sharq Hospital Dibba's sustainable development through measurable targets.



## *Partnerships & Education*

- 🌿 Engage Community in Sustainability
- 🌿 Collaborate with Local & Global Initiatives
- 🌿 Conduct Employee Green Training
- 🌿 Promote Green Healthcare Research

# 2025 - 2027 SUSTAINABLE HEALTHCARE GOALS

Strategic objectives guiding Al Sharq Hospital Dibba's sustainable development through measurable targets.

## *Climate Resilience*

- 🌿 Expand AI Diagnostics & Smart Systems
- 🌿 Implement Water Conservation Program
- 🌿 Enhance Emergency Preparedness
- 🌿 Conduct Climate Risk Assessments








Advancing Al Sharq Hospital Dibba's Commitment to Sustainable Healthcare and Global Health Impact by Aligning with Joint Commission International (JCI) Standards.

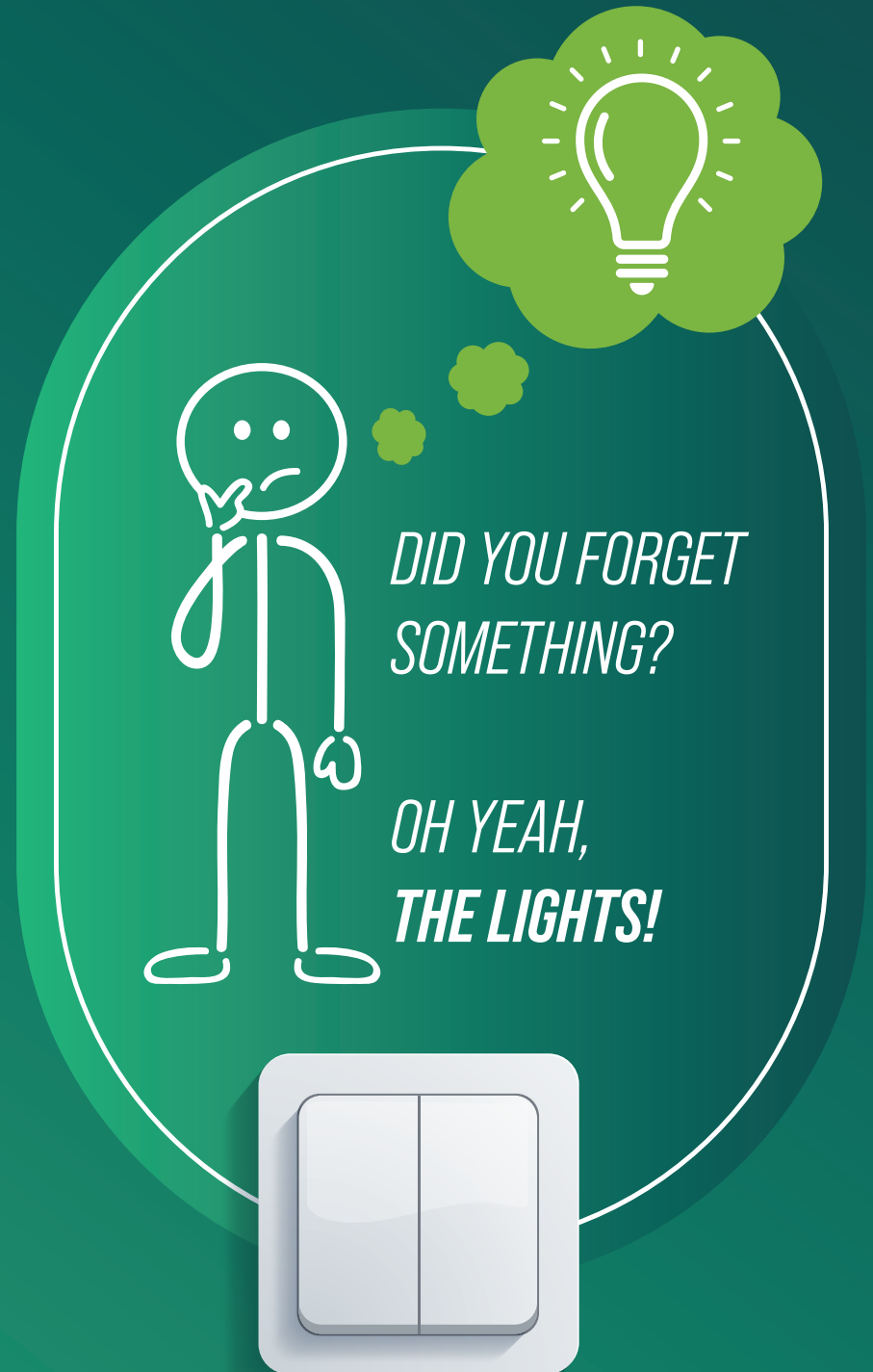


## *Our Journey So Far*

Over the past period, Al Sharq Hospital has focused on practical, real-world improvements that make a measurable difference.

-  Automating systems to reduce unnecessary energy use
-  Optimizing equipment performance
-  Improving water efficiency
-  Reducing avoidable waste
-  Strengthening monitoring and accountability

*These changes were made without compromising patient care, comfort, or safety.*



# OUR SUSTAINABILITY FRAMEWORK



Sustainability at Al Sharq Hospital is built on integrated pillars that support safe care, operational efficiency, and long-term environmental responsibility.



## *Using Energy More Responsibly*

Energy conservation is one of our key focus areas.

Through automation, system optimization, and smarter operational controls, we are reducing energy consumption while maintaining a safe and comfortable environment for patients, visitors, and staff.

Energy efficiency is not about “using less care” — it is about using energy intelligently.

## *Protecting Water Resources*

Water is essential for healthcare and for life.

At Al Sharq Hospital, we are committed to:

- 🌿 Using water efficiently
- 🌿 Reducing unnecessary consumption
- 🌿 Optimizing pumping and distribution systems
- 🌿 Monitoring usage to identify improvement opportunities

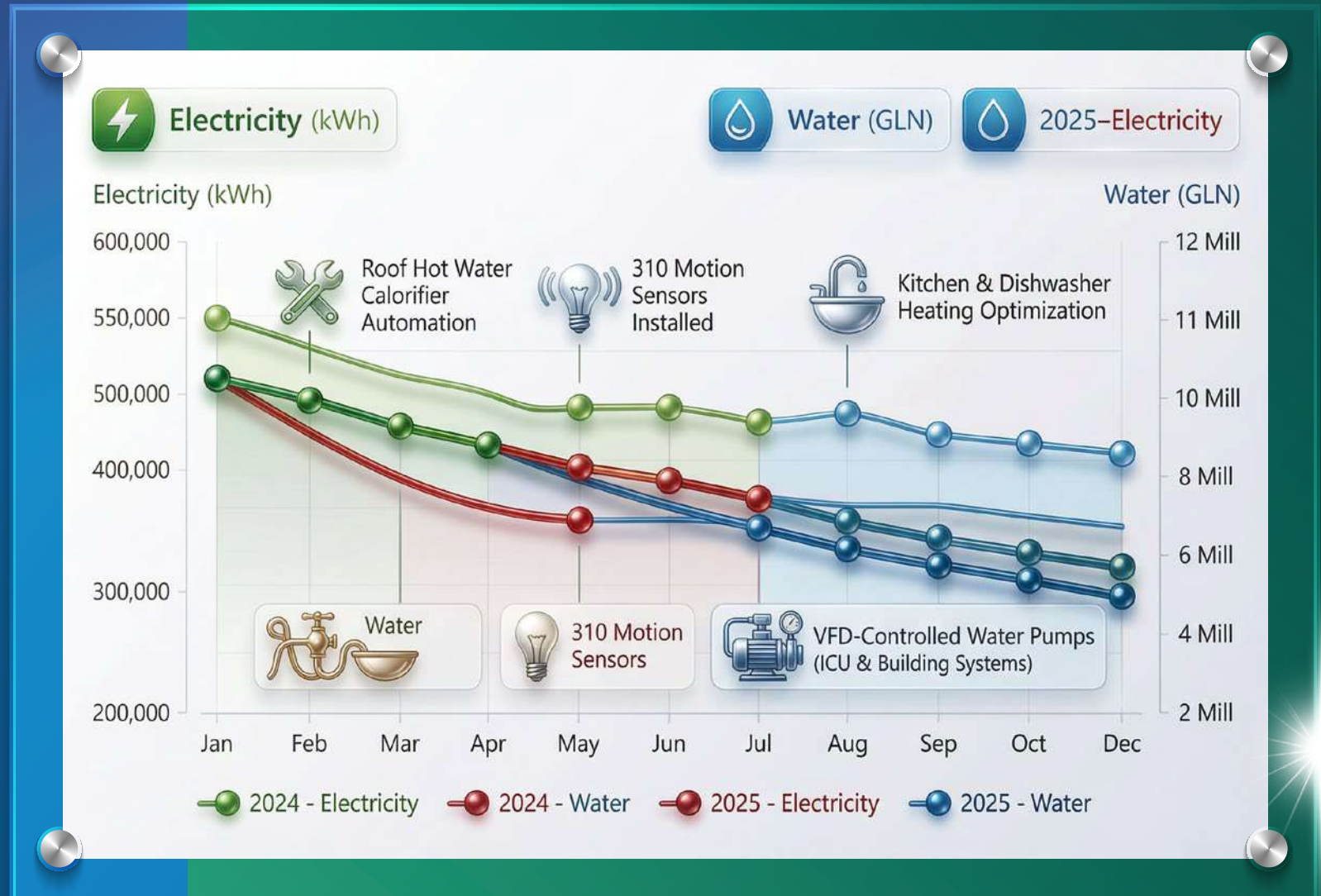
*Every drop saved supports long-term community wellbeing.*



# ENERGY & WATER PERFORMANCE IMPROVEMENT

## AL SHARQ HEALTHCARE 2024 - 2025

This figure highlights Al Sharq Healthcare's year on year reduction in electricity usage (kWh), achieved through strategic infrastructure automation, energy efficiency optimization, and conservation measures across clinical and non clinical operations.



Aligned with Joint Commission International (JCI) Global Health Impact and Facility Management standards, supporting responsible resource utilization and environmental stewardship.

## *Reducing Waste, Reusing Wisely, Recycling Correctly*

Waste management is a critical part of safe healthcare.

Our approach focuses on:

- 🌿 Reducing unnecessary waste at the source
- 🌿 Reusing materials safely where appropriate
- 🌿 Recycling paper, plastics & approved materials
- 🌿 Ensuring safe segregation of medical waste

Responsible waste management protects patients, staff, and the environment.



## *Digital Transformation and Paperless Care*

Digitalization plays a major role in sustainability.

By moving toward electronic records, digital reports, and paperless workflows, we:

- 🌿 Reduce paper consumption
- 🌿 Improve data security
- 🌿 Enhance efficiency and accuracy
- 🌿 Support faster, safer patient care

Digital healthcare is not only smarter — it is more sustainable.



## *Responsible Purchasing and Green Suppliers*

What we buy matters.

We work toward choosing:

- 🌿 Energy-efficient equipment
- 🌿 Products with reduced environmental impact
- 🌿 Suppliers who share responsible practices
- 🌿 Sustainable medical supplies where possible

Responsible procurement supports long-term environmental and operational sustainability.



## *Sustainable Medications and Medical Supplies*

Efficient medication and supply management reduces:

- 🌿 Wastage
- 🌿 Expired items
- 🌿 Environmental impact
- 🌿 Safety risks

This supports both patient safety and responsible resource use.



## *People Make Sustainability Work*

Sustainability is not driven by systems alone — it is driven by people.

Through awareness, engagement, and shared responsibility, our staff contribute daily to:

- 🌿 Energy conservation
- 🌿 Waste reduction
- 🌿 Paperless practices
- 🌿 Safe and sustainable care delivery

Every small action matters.




# *Monitoring, Learning, and Improving*

We continuously monitor our performance to understand:



*What is  
working?*



*What can be  
improved?*



*Where future  
opportunities  
exist?*

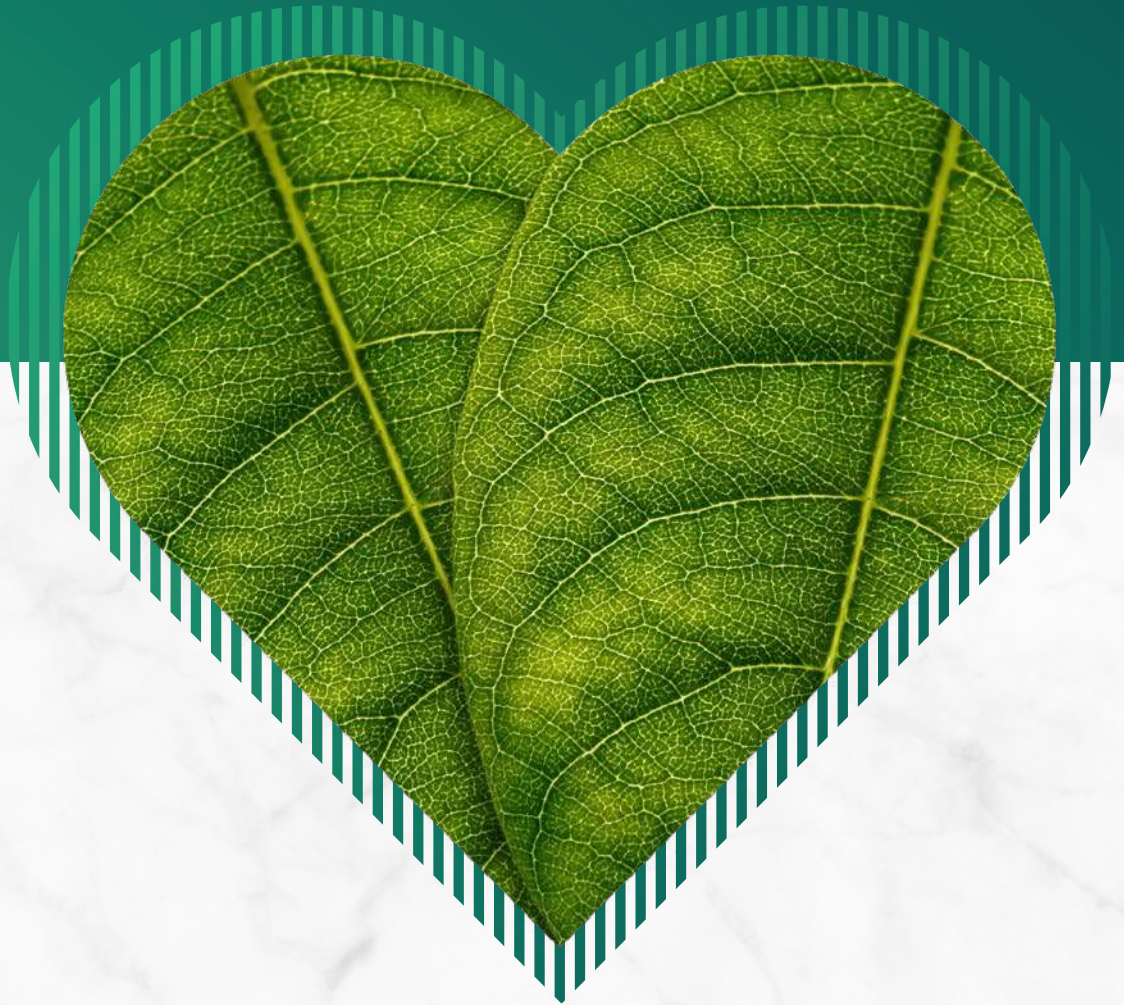


*Sustainability is a journey of learning, not a one-time achievement.*

## *Our Commitment to Global Health Impact*

Our sustainability efforts align with international best practices and the principles of global health impact.

By reducing environmental harm, strengthening systems, and promoting responsible operations, we contribute to healthier communities today and in the future.



## *Looking Ahead*

Al Sharq Hospital will continue to:

- 🌿 Expand sustainability initiatives
- 🌿 Invest in smart technologies
- 🌿 Strengthen digital transformation
- 🌿 Engage staff and partners
- 🌿 Improve environmental performance year after year



# تقرير الأثر الصحي العالمي والاستدامة



مستشفى الشرق  
ALSHARQ HOSPITAL  
دبا Dibba

2024 - 2025

# رسالة المستشفى

في عالم تتزايد فيه التحديات الصحية والبيئية، أصبحت مسؤولية مؤسسات الرعاية الصحية تتجاوز تقديم العلاج لتشمل المساهمة في حماية الموارد، وتعزيز الاستدامة، ودعم صحة المجتمعات على المدى الطويل.

وانطلاقاً من هذا الإدراك، يلتزم مستشفى الشرق – دبا بتبني ممارسات مسؤولية توازن بين التميز في تقديم الرعاية الصحية، والحفاظ على البيئة، وتعزيز الأثر الصحي الإيجابي داخل المجتمع وخارجه.

يعكس هذا التقرير التزام المستشفى بالاستدامة كجزء أصيل من منظومة العمل المؤسسي، وليس كمبادرة منفصلة أو جهد مؤقت. فهو يسلط الضوء على النهج المتكامل الذي تتبعه لإدارة الموارد بكفاءة، وتحسين الأداء البيئي، ودعم أنظمة رعاية صحية آمنة وقادرة على الاستمرار.

## الاستدامة في صميم الرعاية الصحية

يؤمن مستشفى الشرق – دبا بأن الاستدامة تمثل عنصراً أساسياً في ضمان استمرارية الخدمات الصحية وجودتها. فالإدارة الرشيدة للطاقة والمياه، وتقليل النفايات، والتحول الرقمي، والشراء المسؤول، جميعها عوامل تساهم في تعزيز سلامة المرضى، ورفع كفاءة التشغيل، وتقليل المخاطر البيئية.

ومن هذا المنطلق، نعمل على دمج مبادئ الاستدامة في جميع جوانب العمل السريري والتشغيلي، بما يدعم رسالتنا في تقديم رعاية صحية آمنة، موثوقة، ومسؤولة.



# الأثر الصحي العالمي ودور المستشفى

يمتد دور مؤسسات الرعاية الصحية إلى ما هو أبعد من حدود المنشأة.  
فالممارسات المستدامة تسهم في:

تقليل الأثر البيئي للرعاية الصحية 

دعم صحة المجتمعات على المدى الطويل 

تعزيز مرونة الأنظمة الصحية 

حماية الموارد للأجيال القادمة 

ويأتي هذا التقرير ليعكس مساهمة مستشفى الشرق – دبا في تحقيق هذا الأثر الصحي العالمي، من خلال مبادرات عملية ونهج مؤسسي قائم على التحسين المستمر.



## حول هذا التقرير

يقدم هذا التقرير نظرة شاملة على رحلة مستشفى الشرق – دبا في مجال الاستدامة، موضحاً المبادئ التي نستند إليها، والممارسات التي نتبعها، والتوجهات المستقبلية التي نعمل على تحقيقها.

وقد تم إعداد هذا التقرير ليكون:

وثيقة مرجعية للجمهور 

أداة شفافية ومساءلة 

انعكاساً لالتزام المستشفى بالمعايير الدولية وأفضل الممارسات 

## نحو مستقبل أكثر استدامة

سيواصل مستشفى الشرق – دبا الاستثمار في الحلول الذكية، وتعزيز الثقافة المؤسسية، وتطوير الأنظمة التي تضمن تقديم رعاية صحية عالية الجودة، مع احترام البيئة وحماية الموارد.

إن التزامنا بالاستدامة هو التزام بصحة الإنسان اليوم... وبمستقبل أكثر أماناً للأجيال القادمة.

